

FLYBOX

INNOVATIVE AVIONICS



My-EMS CRX

Engine Monitoring System
Installation Manual

**Installation Manual, Safety
Instructions and Warning Booklet**

**This product is not TSO'd and cannot be installed
into traditional FAA Part 23 and similarly Type-
Certificate Aircraft**

Document I2024MYEMSCRX
Revision#1.0, 03/2024
For firmware version 1.0.0

This booklet is suitable for printing in A5 format.

INTRODUCTION

IMPORTANT NOTICE AND WARNINGS

INDEX

SYSTEM OVERVIEW

MECHANICAL INSTALLATION

ELECTRICAL INSTALLATION

SENSORS INSTALLATION

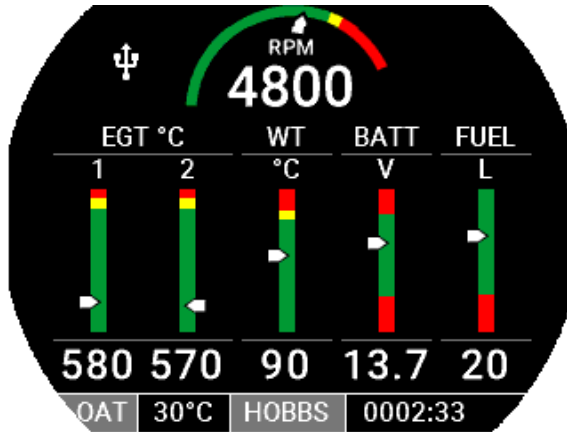
AFTER INSTALLATION OPERATIONS

TECHNICAL SPECIFICATIONS

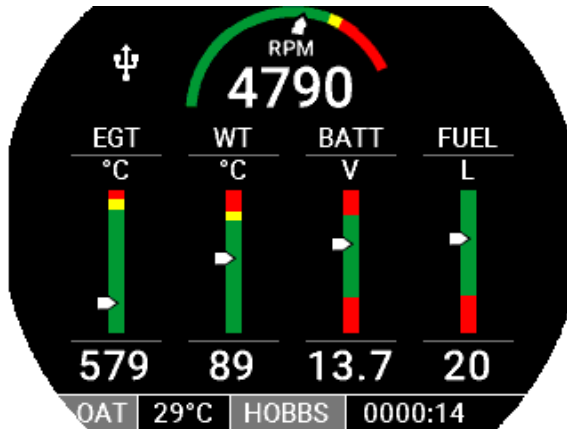
WARRANTY - WARRANTY ACTIVATION

DISCLAIMER

Example of available screen



Engine main data: Rotax 582



Engine main data: Cosmos300

Thank you for purchasing a Flybox® **My-EMS** instrument.

Our intention in developing the **My-EMS** was to create a product that is light and compact, powerful and easy to use.

The **My-EMS** is equipped with a state-of-the-art highly visible display and a powerful 32-bit microcontroller. The owner has the option of keeping the instrument software up-to-date by downloading the latest revision available on www.flyboxavionics.it and installing it via a USB pen drive.

We are confident that our products will be satisfactory and make your flying experience enjoyable.

Symbols used in the User Manual



NOTE: Used to highlight important information.



CAUTION: Used to warn the user, it indicates a potentially hazardous situation or improper use of the product.



WARNING: Used to indicate a dangerous situation that can cause personal injury or death if the instruction is disregarded.

FAILURE TO DO SO MAY RESULT IN SERIOUS
INJURY OR DEATH.



WARNING: These instructions must be read and respected by installers, and retained for ready reference. The installer must read, understand (or be explained) and heed all instructions and warnings supplied with this product and with those products intended for use in association with it. Always keep a copy of the Installation and User Manual, Safety Instructions and Warning Booklet on the aircraft. In case of change of ownership, the Installation and User Manual, Safety Instructions and Warning Booklet must be delivered together with all of the other papers.



WARNING: Read the Installation and User Manual, Safety Instructions and Warning Booklet before installing the device in the aircraft and follow the procedure described therein.



WARNING: This device is intended to be installed on **NON-TYPE CERTIFIED AIRCRAFT ONLY**, as it does NOT require any air operator's certificate. Refer to your national aviation authorities to check if this device can be installed on your aircraft.



WARNING: It is the owner's responsibility to test this device before operating the aircraft and to make sure nobody is using it unless properly instructed and authorized to do so.



WARNING: Once the installation process is completed, it is extremely important to test the device before taking off to make sure it works properly. Therefore, we strongly suggest to double check all of the electronic instruments available on the aircraft and to turn them on to verify they function correctly.



WARNING: This device is operated through a software which from time to time can be updated and/or subject to change. Please, always refer to the Installation and User Manual, Safety Instructions and Warning Booklet for the last updated version of the software available on www.flyboxavionics.it



WARNING: It is the responsibility of the installer to properly install the device on the aircraft. In case of calibration, or any technical or functional customization of the device, the responsibility lies with the individual who carried out such operation.



WARNING: If this product is not used correctly, or it is subjected to additions or alterations, the effectiveness of this device may be considerably reduced.



WARNING: Alterations, additions, or repairs not performed by the instrument manufacturer or by a person or organization authorized by the manufacturer shall negate any warranty.



WARNING: The unit isn't waterproof. Serious damage could occur if the unit is exposed to water or spray jets.



WARNING: My-EMS must be turned off in case of start with booster. Open the corresponding breaker before starting. Warranty shall not apply for damage to the instrument for this reason.



NOTE: The consumer decides of his own free will if the purchased product is suitable and safe for his need. If the consumer does not agree with the notices contained in this Installation and user Manual, Safety Instructions and Warning Booklet, do not install this instrument in his aircraft.



NOTE: Flybox Avionics reserves the right to change or improve its products as well as terms, conditions, and notices under which their products are offered without prior notice.



NOTE: The Installation and User Manual, Safety Instructions and Warning Booklet will be updated annually if needed.

All changes or updates will be published on our website www.flyboxavionics.com in the "support" section.



NOTE: Check the website www.flyboxavionics.it periodically for software and manual updates.



NOTE: For some products, registration may be required to receive important news or information on available firmware updates or to receive security information.

INDEX

1.0 System Overview 12

2.0 Panel Indicators & Commands 14

3.0 My-EMS Mechanical Installation 15

 3.1 Panel Cut-Out..... 17

4.0 Electrical Installation..... 18

 4.1 My-EMS Electrical Installation 20

 4.1.1 CN1 15 Pole Connector 21

 4.1.2 CN2 25 Pole Connector 25

5.0 Sensors Installation 29

 5.1 Water Temperature Sensor 29

 5.2 EGT Sensors 30

 5.2.1 Flybox® EGT thermocouples 30

 5.3 Outside Air Temperature Sensor (OAT)..... 32

 5.4 Fuel Level Sensor 33

 5.4.1 Fuel level sensor connection 33

INDEX

5.5 RPM Pickup Inputs 35

5.6 Separable Connections for Thermocouples 36

6.0 Instrument Use 37

1.0 System Overview

CONSTRUCTION FEATURES

The **My-EMS** front panel is built from solid aluminum alloy, CNC milled and powder coated to last a long time over the years always showing a new appearance. The other parts of the housing are made of corrosion-protected aluminium.

ELECTRONICS

The **My-EMS** use a powerful 32 bit microcontroller to ensure reliability and accuracy over time. Thanks to its feature, it can interface with all types of latest-generation engines.

ERGONOMICS

- Large 3.5 inch TFT display, 320x240 Pixels, 1000 nits, antiglare surface, sunlight readable, wide temperature range.
- A high quality knob encoder with push button for easy access to all features.
- Automatic backlight dimming function thanks to external light sensor.

EASY SOFTWARE UPDATE

The user can download any new firmware, when available from Flybox website, connect a USB pen drive to the instrument and freely update it with the last features.

EASY DATALOG SAVING

Easy logging of the data for debug purpose. If needed, the **My-EMS** unit can save the last 100 hours of the flight log on the internal memory, easily exportable to an USB pen drive. The user can then send the log via e-mail to the installer for a help/support request.

ABOUT SAFETY

My-EMS has been designed with safety in mind. Thanks to the processor's calculation speed, the user is quickly alerted in the event of engine faults.



NOTE: for easy access to the USB port, it is recommended to install a USB extension cable in the **My-EMS** instrument and store the free connection in an easily accessible part of the dashboard. It is not recommended to use extension cables longer than 50 CM.

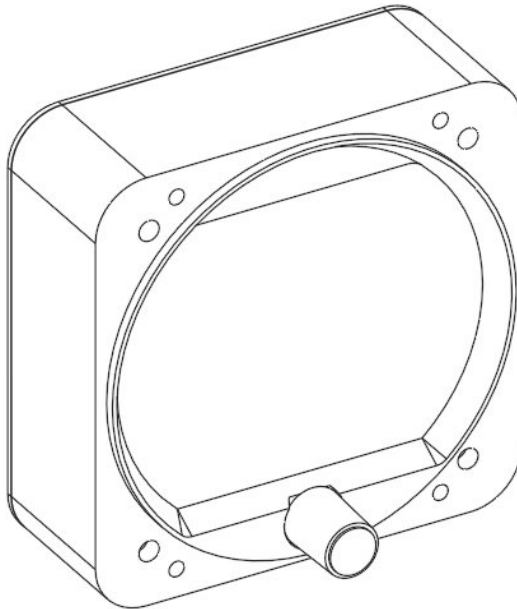
2.0 Panel Indicators & Commands

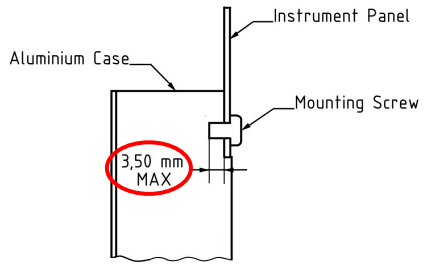
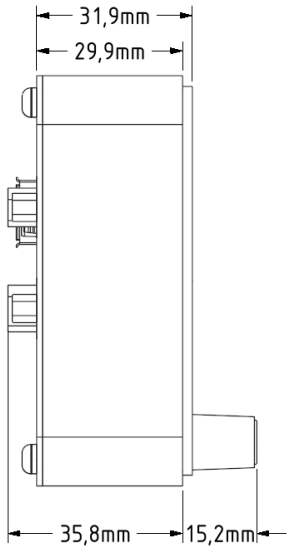
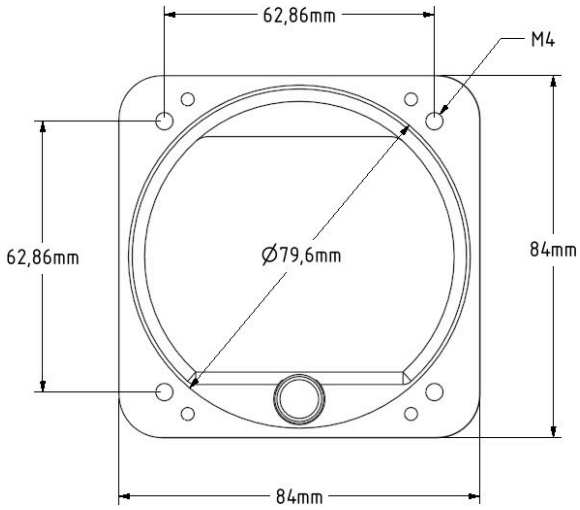


3.0 My-EMS Mechanical Installation

It's recommended to choose a position that permits optimal display visibility. The instrument is supplied with four M4X6mm screws to install it to the panel, if you use other screws consider that **the maximum thread length inside the instrument body is 3.5mm.**

Screws longer than 6 mm will damage the instrument and void the warranty.





3.1 Panel Cut-Out

The **My-EMS** instrument fits in a standard 3 1/8" (80 mm) panel cutout.



NOTE: For an installation without interference, consider making a hole of at least 80.5 mm diameter.

4.0 Electrical Installation

POWER SPECIFICATIONS

My-EMS is capable of operating at either 14 or 28 VDC. On the following table are listed the power requirements for My-EMS; the specified current draw is measured with the My-EMS display backlight set to maximum brightness and without any sensor attached.

Power Supply	My-EMS
14 V	150 mA 2.1 W
28 V	80 mA 2.24 W



CAUTION: Voltage peaks on the supply line that exceeds the operating limits can damage the device.

General wiring hints:

- It is recommended that My-EMS be installed prior to constructing the wiring harnesses and cables.
- Use aeronautic cable for the wiring.
- Take care to properly insulate any exposed wire to avoid short circuits between them.
- All cable routing should be kept as short and as direct as possible.

- Do not solder thermocouple wires terminations. If it is necessary to split in separable harnesses the thermocouples connections, you must use proper cables and connectors, available also from Flybox® (see chap.5.6 for further details).
- Check that there is ample space for the cabling and mating connectors.
- Avoid sharp bends in cabling.
- Avoid routing near aircraft control cables.
- Avoid routing cables near heat sources, RF sources, EMI interference sources, power sources and close to or parallel to spark plug cables

The installer shall supply and fabricate all of the cables, unless a pre-wired cable has been ordered.

If no pre-wired cable has been ordered, the required connectors and associated crimp contacts are supplied with the optional My-EMS connector kit.

Contacts for the connectors must be crimped onto the individual wire of the wiring harness.

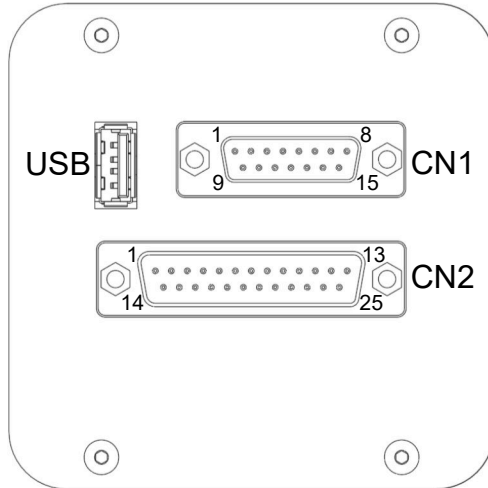


CAUTION: To avoid damage to the My-EMS take precautions to prevent Electro-Static Discharge (ESD) when handling connectors and associated wiring. ESD damage can be prevented by touching an object that is on the same electrical potential as the My-EMS before handling it.



CAUTION: Check wiring connections for errors before connecting any wiring harnesses. Incorrect wiring could cause internal component damage.

4.1 My-EMS Electrical Installation

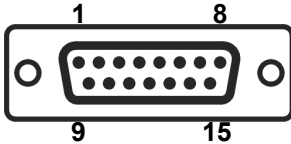


Rear view

The required connectors and terminals are supplied with the optional My-EMS connector kit:

- D-Sub 15 solder terminals female connector
- D-Sub 25 crimp terminals female connector
- D-Sub female crimp terminals
- D-Sub 15 pole cap
- D-Sub 25 pole cap

4.1.1 CN1 15 Pole Connector



D-Sub 15 pin Plug Connector.
View from wires insertion side.

PIN #	Type	Description	Note
1	In	+Positive Main supply	Max 10-30 VDC
2	-	Not Used / Reserved	
3	-	Not Used / Reserved	
4	-	Not Used / Reserved	
5	-	Not Used / Reserved	
6	Out	NPN open collector Out	Max 300 mA (Not protected)
7	In	External switch	
8	In	RPM signal input	Rotax 582 -5 ÷ -100 Vpp Min 300 uS
9	In	GND Main supply	
10	-	Not Used / Reserved	
11	-	Not Used / Reserved	
12	-	Not Used / Reserved	
13	-	Not Used / Reserved	
14	In	GPS Input	
15	In	RPM signal input	Cosmos 300 5÷100 Vpp Min 300 uS

Signals explanation

- **Power supply (PIN#1-9):**

The My-EMS is capable of operating at either 14 or 28 VDC, AWG22 wire is enough. It's recommended to insert a 1A circuit breaker on the positive wire that supply My-EMS.

To avoid errors in the measurements it is essential that the ground of the My-EMS share the same ground of all the engine sensors (so that there is virtually no measurable voltage between these grounds). Be sure that any ground wire of the My-EMS is routed to the engine block, and the engine block must have a connection to the negative of the battery.

- **Open collector out (PIN#6):**

Used to connect the negative pin of any external buzzers or LEDs. This output can also be used to send a tone in the intercom using the Flybox optional device cod.105899. This output is not protected against short circuits or overcurrents, which could permanently damage it.

- **External switch (PIN#7):**

Connect an external switch between this pin and ground to be able to switch between pages and knowledge any alarm messages without using the knob.

- **Rotax 582 RPM signal input (PIN#8):**

This RPM input support Rotax 582 pickup and other similar types of tachometer transducer.

Connect the transducer output to pin #8 of CN1 connector and transducer ground to aircraft ground (Rotax pickup has a single wire to be connected to pin #8 of CN1 connector).

- **GPS input (PIN#14):**

Connect this pin to the GPS “TX” signal of an external GPS. The GPS signal is used for displaying the actual time, for the “RANGE” and “RESERVE” functions on the optional fuel computer page and to have the date/time reference on the datalogger data. It's required to use shielded cable, AWG24 is enough.

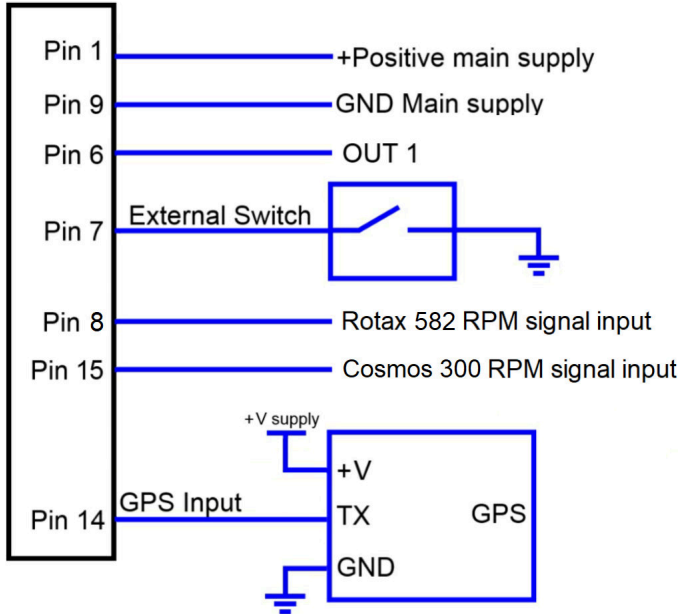
The My-EMS supports all GPS with *RS232* output and *NMEA183* sentecens (RMC, RMB, GGA).

- **Cosmos 300 RPM signal input (PIN#15):**

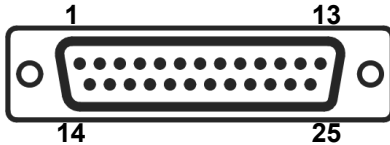
This RPM input support Cosmos 300 pickup and other similar types of tachometer transducer.

Connect the transducer output to pin #15 of CN1 connector and transducer ground to aircraft ground (Cosmos pickup has a single wire to be connected to pin #15 of CN1 connector).

CN1 Wiring Connections



4.1.2 CN2 25 Pole Connector



D-Sub 25 pin Plug Connector.
View from wires insertion side.

PIN #	Type	Description	Note
1	In	EGT1 thermocouple K (+)	Max 0 - 2.5 V
2	In	EGT2 thermocouple K (+)	Max 0 - 2.5 V
3	-	Not Used / Reserved	
4	-	Not Used / Reserved	
5	-	Not Used / Reserved	
6	-	Not Used / Reserved	
7	-	Not Used / Reserved	
8	In	WT sensor input	
9	In	Fuel level sensor input	Res: max 300 Ω Volt: 0~5 V
10	-	Not Used / Reserved	
11	In	OAT sensor input (PT1000)	Res: max 36 kΩ Volt: 0~5 V
12	-	Not Used / Reserved	
13	Out	+5V for sensor supply	Max 300 mA

PIN #	Type	Description	Note
14	In	EGT1 thermocouple K (-)	
15	In	EGT2 thermocouple K (-)	
16	-	Not Used / Reserved	
17	-	Not Used / Reserved	
18	-	Not Used / Reserved	
19	-	Not Used / Reserved	
20	-	Not Used / Reserved	
21	In	WT (-)	Connect to ground
22	-	Not Used / Reserved	
23	-	Not Used / Reserved	
24	-	Not Used / Reserved	
25	In	Ambient light sensor input	

Signals explanation

- **EGT positive inputs (PIN#1-2):**

Connect to these pins the positive wire of the thermocouples.

- **WT - Water temperature positive input (PIN#8):**

Connect to these pins the single wire of the VDO 323-801-008-002D WT sensor.

- **EGT negative inputs (PIN#14-15):**

Connect to these pins the negative wire of the thermocouples.

- **WT - Water temperature negative input (PIN#21):**

This pins must be connected to ground (connect it to the same ground that supply power to the My-EMS).

- **Fuel level sensor input (PIN#9):**

This fuel level sensor input supports resistive (with max resistance of 300 ohm) or capacitive (0-5V) sensors.

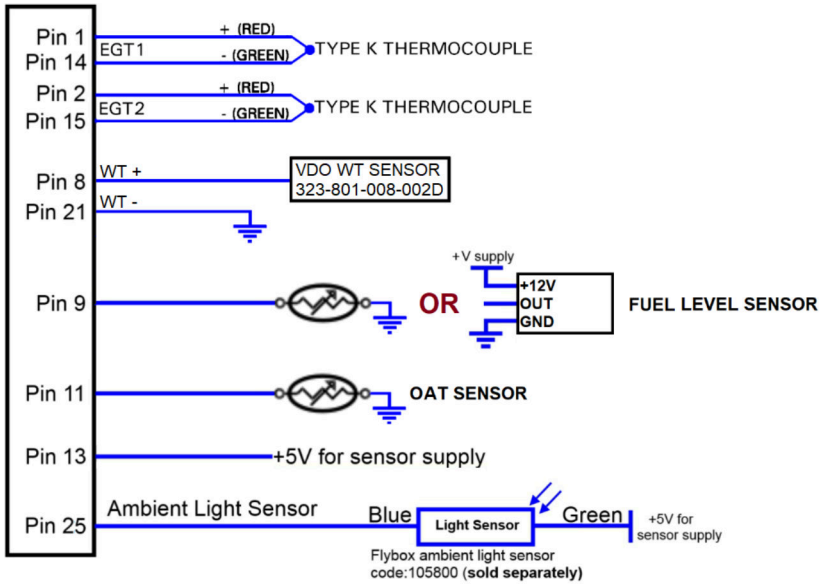
- **OAT - Outside air temperature (PIN#11):**

Support PT1000 sensors. See chap.5.3 for further details.

- **Ambient light sensor input (PIN#25):**

Support Flybox 105800 sensor. Not required if you want to manually adjust the instrument backlight.

CN2 Wiring Connections



5.0 Sensors Installation

Carefully follow the instructions in the following paragraphs for the correct installation of the sensors. Check the compatibility of your sensors prior to installation.



NOTE: It is essential that all the engine sensors and the My-EMS share the same ground, and that there is virtually no measurable voltage between these grounds. Be sure that any ground wire of the My-EMS is routed to the engine block, and the engine block must have a connection to the negative of the battery. Errors in the measurements are usually caused by points in the aircraft where there is insufficient grounding.

5.1 Water Temperature Sensor

The supported Water Temperature sensor type is:

- **VDO 323-801-008-002D**

Install water temperature sensor with a single wire to pin #8 of CN2 and connect pin #21 to aircraft ground (GND).

5.2 EGT Sensors

In the My-EMS up to 2 EGT sensors can be connected; the supported sensor type is:

- **K-type thermocouples**

Thermocouple probes have a two wires connection: positive wire and negative wire. The positive wire are connected to pins #1 and #2 (EGT1 and EGT2) of CN2, the negative wires are connected to pins #14 and #15 (EGT1 and EGT2).

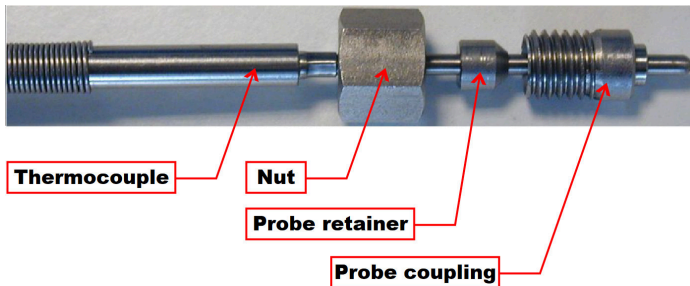
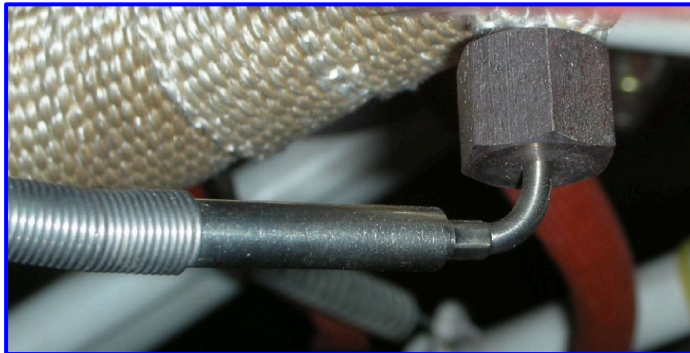
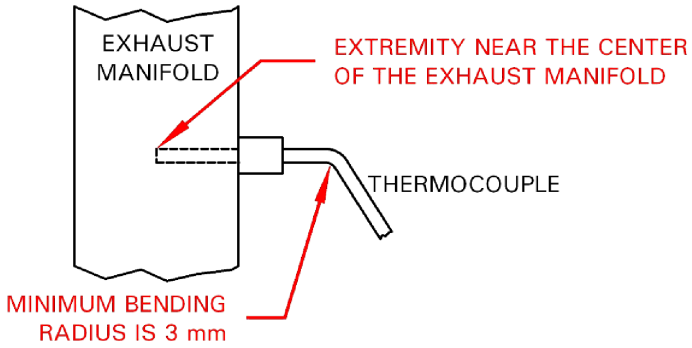
My-EMS accepts both insulated and grounded thermocouples.

5.2.1 Flybox® EGT thermocouples

Flybox® EGT thermocouples (P/N 601008) are K-type; positive wire is RED, negative is GREEN.

INSTALLATION NOTES:

1. Drill a 6 mm diameter hole in the exhaust manifold (at the position indicated by the engine's manufacturer) and weld the furnished probe coupling.
2. Insert the thermocouple (with the nut and the probe retainer) in the probe coupling and position its extremity near the center of the exhaust manifold.
3. Fix the thermocouple in this position by blocking the nut. Note that if required the thermocouple can be bended but with a minimum radius of 3 mm.



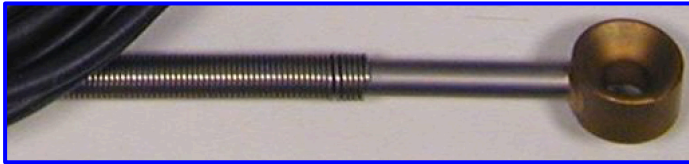
5.3 Outside Air Temperature Sensor (OAT)

The supported OAT sensor types are:

- **PT1000 resistive sensors**

Connect one wire to pin #11 of CN2 and the other wire to aircraft ground (GND).

- **Flybox[®] OAT sensor (P/N 601020)**



Flybox[®] OAT sensor is a PT1000 and can be fixed with a 5 mm countersunk screw.

For optimal outside temperature indication it must not be installed in direct sunlight locations or near heat sources.

5.4 Fuel Level Sensor

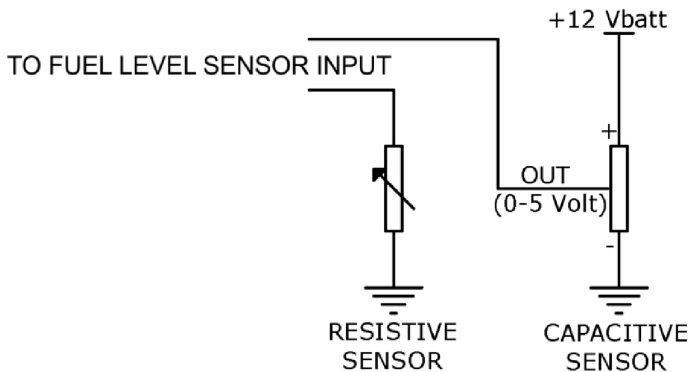
The fuel level input can be connected to both resistive sensors (with max resistance of 300 ohm) and capacitive sensors (with output voltage of 0~5 Volt).

Resistive sensors can be of two types, both supported by the My-EMS: resistive sensors that increase resistance as you add fuel and resistive sensors that decrease resistance as you add fuel.



CAUTION: Resistive type fuel level sensors connected to My-EMS must not be connected to any other instrument. Disconnect any previously used instrument.

5.4.1 Fuel level sensor connection



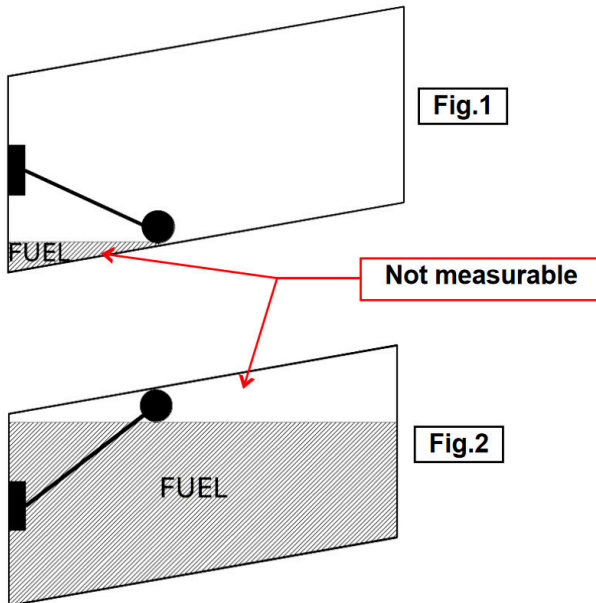


NOTE: Refer to fuel level sensor manual for the detailed electrical and mechanical installation.

Make sure that the fuel level sensor is mounted so that all the fuel in the tank can be measured. If the fuel sensor cannot measure completely the fuel in the tank, the instrument will display inaccurate readings.

For example (**fig.1**) if a fuel sensor cannot measure the lowest part of the tank that contains 7 liters, the instrument will display “0” (zero) for fuel level of 7 liters and below.

Another example (**fig.2**) is if a tank can hold 40 liters of fuel but at 25 liters the fuel is at the top of the sensor, the maximum that the instrument will display is 25 liters.



5.5 RPM Pickup Inputs

My-EMS supports 2 different types of RPM inputs.

One is for Rotax 582 pickup and other similar types of tachometer transducer.

Connect the transducer output to pin #8 of CN1 connector and transducer ground to aircraft ground (Rotax pickup has a single wire to be connected to pin #8 of CN1 connector).

This input accepts RPM Pickup that meet the following characteristics:

amplitude range: $-5 \div -100$ Vpp
min. pulse duration: 300 us

The second is for Cosmos 300 pickup and other similar types of tachometer transducer. Connect the transducer output to pin #15 of CN1 and transducer ground to aircraft ground (Cosmos pickup has a single wire to be connected to pin #15 of CN1).

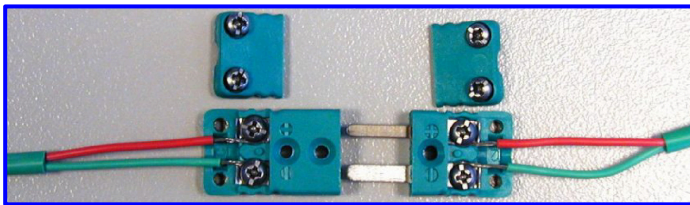
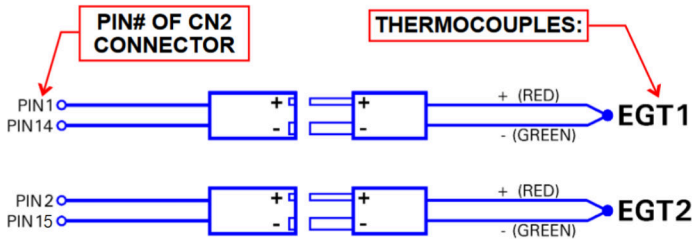
This input accepts RPM Pickup that meet the following characteristics:

amplitude range: $5 \div 100$ Vpp
min. pulse duration: 300 us

5.6 Separable Connections for Thermocouples

If it is necessary to split the thermocouples connections in separable harnesses, you must use proper cables and connectors, available also from Flybox[®] with ord. cod.601012.

The connections are the following:



NOTE: Wires' color are referred to Flybox[®] supplied thermocouples, other thermocouples may have different colors coding. In case of wrong wiring the temperature indication will not be correct.

6.0 Instrument Use

Always refer to the Operating Manual for any information that is not related to the installation itself, e.g. how to navigate through the menus, how to make settings, how to perform backups and restores, how to update the software, etc. etc.

CLEANING

The screen is very sensitive to some cleaning materials and should be cleaned with a clean, damp cloth only.

Technical specifications

My-EMS

- Graphic 3.5" TFT LCD with backlight
- Standard mounting 3-1/8" 80mm
- Powder painted aluminium case
- Dimensions: 85 x 85 x 40 mm (body)
- Weight: 235 g
- Supply voltage: 10 ~ 30 V=
- Power supply: ~2 W
- Operating temperature range: -20 ~ +70°C
- Storage temperature range: -30 ~ +80°C
- Humidity: 90% max (without condensation)
- USB port: for USB 2.0
- Open-collector alarm output (max 300mA, active low)
- Internal storage for 100 hours of datalog

Technical specifications

Sensor Inputs:

- Water temperature from VDO 323-801-008-002D
- 2 Exhaust gas temperature from K-type thermocouples
- Outside air temperature from PT1000 sensor
- Fuel level sensor: resistive (300 ohm max)
or capacitive (0-5V)
- RPM tachometer input for ROTAX 582
- RPM tachometer input for COSMOS 300
- RS232 GPS input NMEA183

One Year Warranty:

Product support and warranty information can be found at www.flyboxavionics.it.

Flybox® warrants the registered Product to be free from defects in materials and workmanship for 12 months from date of delivery. The inactivity of the Products determined by periods of repair does not involve the extension of the warranty period.

This warranty covers only defects in material and workmanship found in the products under normal use and service when the product has been properly installed, maintained and registered. This warranty does not cover failures due to abuse, misuse, accident, improper maintenance, failures to follow improper instructions or due to unauthorized alterations or repairs or use with equipments with which the Products is not intended to be used. Flybox®, after verification of the complaint and confirmation that the defect is covered by warranty, at its sole discretion, will either replace or repair the Products at no costs for the customer. Alterations, additions, or repairs not performed by the manufacturer shall negate any warranty. This warranty doesn't cover cosmetic or incidental damages. Shipping costs, taxes, custom fee, any other duties and any costs incurred while removing, reinstalling or troubleshooting the Products, shall be at customer's charge.

TO THE EXTENT PERMITTED BY LAW, THE WARRANTIES AND REMEDIES CONTAINED HEREIN ARE EXCLUSIVE AND IN LIEU OF ALL OTHER WARRANTIES EXPRESS, IMPLIED, OR STATUTORY, INCLUDING ANY LIABILITY ARISING UNDER ANY WARRANTY OF MERCHANTABILITY OR FITNESS FOR A PARTICULAR PURPOSE, STATUTORY OR OTHERWISE. THIS WARRANTY GIVES YOU SPECIFIC LEGAL RIGHTS, WHICH MAY VARY BASED ON YOUR JURISDICTION.

TO THE EXTENT PERMITTED BY LAW, IN NO EVENT SHALL UPRIGHT BE LIABLE FOR ANY INCIDENTAL, SPECIAL, INDIRECT, OR CONSEQUENTIAL DAMAGES, WHETHER RESULTING FROM THE USE, MISUSE, OR INABILITY TO USE THIS PRODUCT. SOME JURISDICTIONS DO NOT ALLOW THE EXCLUSION OF INCIDENTAL OR CONSEQUENTIAL DAMAGES, SO THE ABOVE LIMITATIONS MAY NOT APPLY TO YOU.

Out of warranty repairs

Products that can not be repaired under warranty as out of the maximum term or that do not work for reasons that would have been covered by warranty, can be repaired at a flat rate as described on the site. For out-of-warranty eligible damages, the repair must be assessed for each individual case.

Term of Use and Disclaimer

Limitation of Liability

In no event shall MICROEL s.r.l. be liable for any direct, indirect, punitive, incidental, special consequential damages whatsoever arising out of or connected with the use or misuse of its products.

Entire Obligation

The TERM OF USE, WARRANTY AND DISCLAIMER document states the entire obligation of MICROEL S.r.l. with respect to the products. If any part of this disclaimer is determined to be void, invalid, unenforceable or illegal, including, but not limited to the warranty disclaimers and liability disclaimers and liability limitations set forth above, then the invalid or unenforceable provision will be deemed superseded by a valid, enforceable provision that most closely matches the intent of the original provision and the remainder of the agreement shall remain in full force and effect.

General

This disclaimer statement is governed by the laws of ITALY. You hereby consent to the exclusive jurisdiction and venue of the Courts of competent jurisdiction, ITALY, in all disputes arising out of or relating to the use of this product. Use of this product is unauthorized in any jurisdiction that does not give effect to all provisions of these terms and conditions, including without limitation this paragraph.

Date	Rev.	Description
March 2024	1.0	First release

Flybox® reserves the right to change the terms, conditions, and notices under which their products are offered without prior notice”.

WARNING: All photos, data, drawings, instruments layouts, technical solutions and data representation you find in this document or watching at FLYBOX® instruments working and/or you can access by means of any other media, including web sites, are sole property of MICROEL s.r.l., cannot be copied or imitate without a written permission of MICROEL s.r.l. itself and are protected by law, even by means of extended international copyright and/or specific patents deposited. Any infringement of this statement and of MICROEL s.r.l. intellectual property will be prosecuted.
©2019 Microel s.r.l. – all rights reserved

Important

Do not send your instrument for repair until you have filled out the request form on the support page at www.flyboxavionics.it. After filling out the form you will receive an authorization email with the RMA number.

Page intentionally blank

Flybox® is a registered brand of Microel s.r.l.- Italy
www.flyboxavionics.it

MICROEL s.r.l.
Via Mortara 192-194
27038 Robbio (PV) - ITALY
Tel +39-0384-670602 - Fax +39-0384-671830

My-EMS CRX - Installation Manual,
Safety Instructions and Warning Booklet