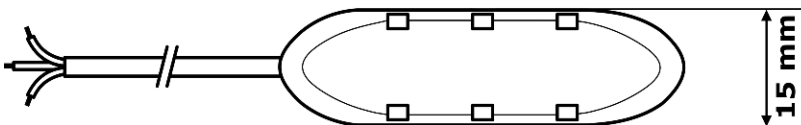
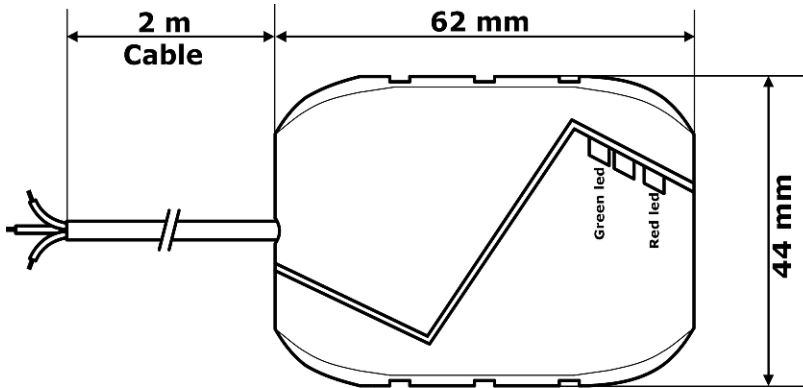
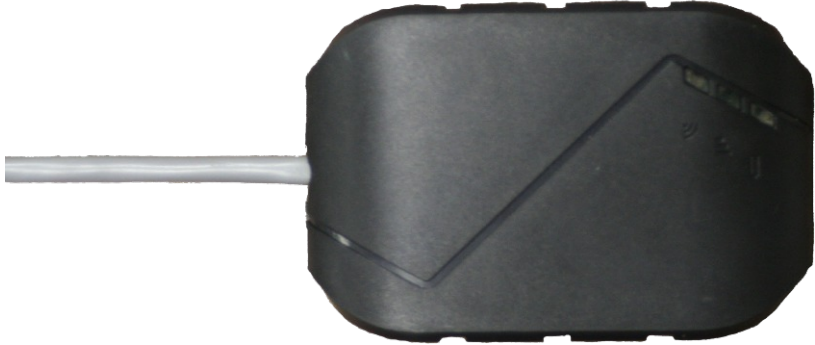
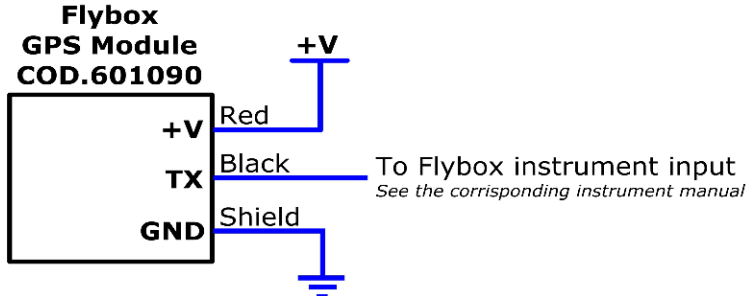


## GPS4 cod.601090



## Electrical installation for GPS4 cod.601090

The Flybox® GPS4 has one shielded cable with two conductors.



### Led specifications

LED	LED status	Meaning
RED led	OFF	GPS4 is OFF
	ON	GPS4 is ON
Green led	OFF	GPS4 has <b>NOT</b> made the FIX yet
	Blink	GPS4 has made the FIX

### Electrical connections

RED wire	Positive supply 8~28 V
BLACK wire	Signal out
Copper shield	Ground GND supply

### Technical specifications

Power supply	8 ~ 28 VDC
Power consumption	40 mA
Operation temperature	-20 ~ +70 °C
Dimensions	44 x 62 x 15 mm
Cable length	2 m
Receiver characteristics	72-Channel concurrent GNSS Receiver (GPS, GLONASS)
Signal out	RS232 electrical level, 9600bps
Output messages	NMEA0183 GNGGA, GNGSA, GNRMC